



Gifted and Talented 101

GT Department, Policies, &
Procedures in Jefferson County
School District



WELCOME!

- ***Matt Wilkinson*** – Gifted and Talented Resource Teacher
- ***Jenn Mulhern*** – Gifted and Talented Resource Teacher
- Tonight's Agenda:
 - Overview of Jeffco GT Department
 - Why Identify the Gifted and Talented?
 - Gifted Behavior & Activity
 - Overview of ALP's and Programming
 - Supports for Parents
 - Question and Answer Period

Definition of a GT Student:

- "Gifted and talented children" are those learners between the ages of four and 21 whose abilities, talents, and/or potential for accomplishment are so exceptional or developmentally advanced that they require special provisions to meet their educational programming needs. Children under five who are gifted may also be provided with early childhood special educational services.
- Gifted students include students with disabilities (i.e., twice-exceptional) and students with exceptional abilities or potential from all socio-economic and cultural populations. Gifted students are capable of high performance, extraordinary production, or exceptional learning behavior by virtue of any or a combination of these areas of giftedness:
 - General or specific intellectual abilities
 - Specific academic aptitude
 - Creative or productive thinking
 - Leadership abilities
 - Visual arts, performing arts or musical abilities
 - Psychomotor abilities



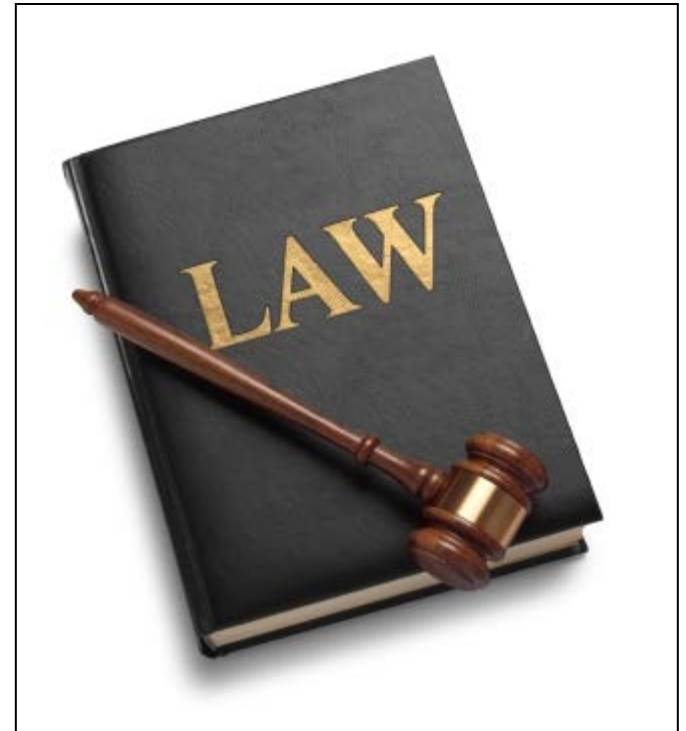
The Jeffco Gifted and Talented Department: 303-982-6650

http://www.jeffcopublicschools.org/programs/gifted_talented/

- Director – Roger Dowd
- Office Staff – Lisa Delameter, Kim Penrose
- 16 GT Resource Teachers – Support Every JeffCo School!
 - 4 GT Counselors – Support GT Center Schools!
 - Many GT Center Based Teachers
 - 1 Building Liaison in each JeffCo School
- Numerous Educators – Support over 11,000 ALP students in neighborhood schools, options, charters, etc.

Why Identify? - State Law:

- HB07-1244 now requires all 57 administrative units in Colorado to adopt and implement a program plan to identify and serve gifted children
- Exceptional Children's Act requires that administrative units program for, and be accountable for exceptional children including gifted and talented, limited English proficient, and special education

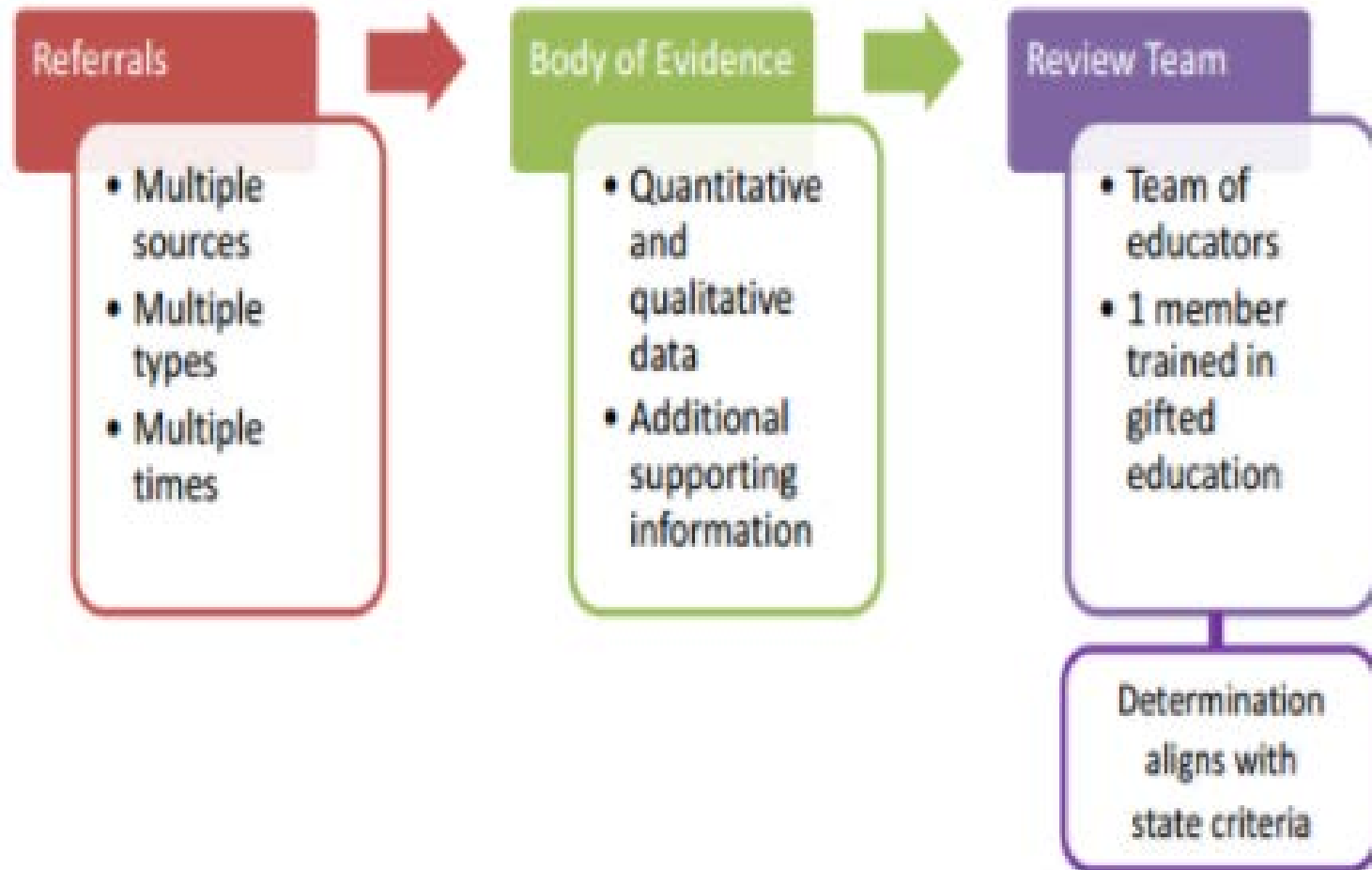


Why Identify? - Guide Academic and Affective Programming

- Gifted and Talented students often have a unique and challenging set of needs that can be academic or affective in nature, or both.
- Identifying GT students allows parents, teachers, students, and all stakeholders to plan for and guide the student's education in a way that works for their style of learning.



Identification Referral Process:



Jeffco's Body of Evidence

3 pieces from any 2 categories below

Cognitive*

CogAT, NNAT, KBIT
IQ tests: DAS, WISC, WPPSI
Torrance Test of Creative
Abilities

**only 1 qualifies*

Achievement*

District: MAP Trend, CMAS
GT Dept: TERA, TEMA, TOMAGS, KTEA,
SAGES, Others

**may have 2 qualifying achievement pieces*

Behavioral Observations*

Scales for Identifying Gifted Students
(SIGS, normed)

**only 1 normed instrument (like
SIGS) qualifies*

Performance Evaluation

State/national academic contest: top
place/ranking

Expert juried performance:

Advanced/Distinguished

Expert Assessed portfolio review:

Advanced/Above grade level

Qualifying evidence is at the 95th percentile or 'Advanced/Exceeds' standards level
No single piece of evidence permanently qualifies/disqualifies a student's identification

Universal Screening - CogAT

- All 2nd Grade JeffCo Students will take the Cognitive Abilities Test (CogAT) in October.
- The CogAT is a test of General Intellectual Ability, normed for both a student's age and grade.
- The CogAT provides cognitive data for a student's body of evidence.
- The CogAT consists of three test batteries, verbal reasoning, quantitative reasoning, and non-verbal reasoning.

Bright vs. Gifted

Bright Child

- Knows the answers
- Is interested
- Is attentive
- Has good ideas
- Works hard
- Answers the questions
- Top group
- Listens with interest
- 6-8 repetitions for mastery
- Understands ideas
- Enjoys peers
- Grasps the meaning
- Completes assignments
- Is receptive
- Copies accurately
- Enjoys school
- Absorbs information
- Technician
- Good memorizer
- Enjoys sequential presentation
- Is alert
- Is pleased with own learning

Gifted Child

- Asks the questions
- Is highly curious
- Is mentally and physically involved
- Has wild, silly ideas
- Plays around, but can test well
- Discusses in detail, elaborates
- Beyond the group
- Shows strong feelings and opinions
- 1-2 repetitions for mastery
- Constructs abstractions
- Prefers adults
- Draws inferences
- Initiates projects
- Is intense
- Creates a new design
- Enjoys learning
- Manipulates information
- Inventor
- Good guesser
- Thrives on complexity
- Is keenly observant
- Is highly self-critical

Gifted Areas of Strength:

Verbal Reasoning GIA	Reading	Writing	Quantitative GIA
General Intellectual Ability (GIA)	Creative	Leadership	Art
Music	Drama	Math	Social Studies
World Language	Psycho-motor	Science	



The CDE no longer recognizes Verbal, Quantitative, and Non-Verbal as “Strength Areas”. These have been converted to GIA as they are processing abilities, not academic strengths

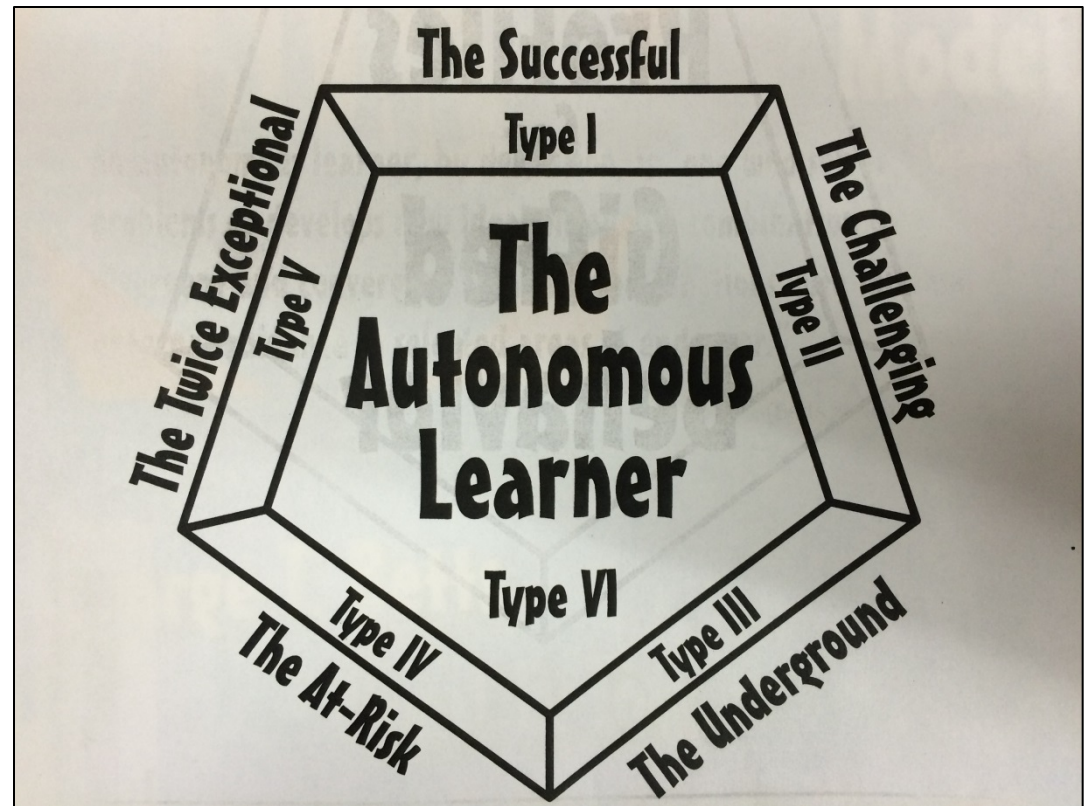
Gifted Behavior:



RENZULLI'S THREE-RING CONCEPTION OF GIFTEDNESS

Dr. George Betts - Profiles of Gifted Behaviors

- Profiles are not static
- Students may exhibit elements of various profiles
- The goal is to be an Autonomous Learner.
- Identifying aspects of the profiles may help in programming/intervention for gifted learners.



Profiles Activity:

- Use your profiles hand-out to think about your student.
- Identify and mark behaviors that you have observed, experienced, etc.
- Take about 10 minutes to complete.
- It is ok to mark various behaviors from different categories.
- When complete, we will look at each profile together.



Dr. George Betts – Profiles of Gifted Behaviors

Type 1 - The Successful: They are smart, ready to please and able to master schoolwork with little or no effort.

Type 2 - The Challenging: They do not learn like the rest of their peers. They keep their creativity and autonomy, but suffer in school because they are not successful.

Type 3 - The Underground: . The underground give up their gifted identity to be socially acceptable with peers. They hide their creativity and intelligence so that they can “belong”.

Type 4 - The At-Risk: They have gone beyond being bored and are resentful and angry. The At-risk may drop out of school or out of life.

Type 5 - The Twice Exceptional: Twice Exceptional students have both an Advanced Learning Plan and an identified disability (504/IEP)

Type 6 - The Autonomous Learner: The autonomous learner is comfortable being a student and a learner. They use their strengths to become life-long learners.

To learn more visit: http://www.davidsongifted.org/db/Articles_id_10114.aspx

What happens once a student is identified?

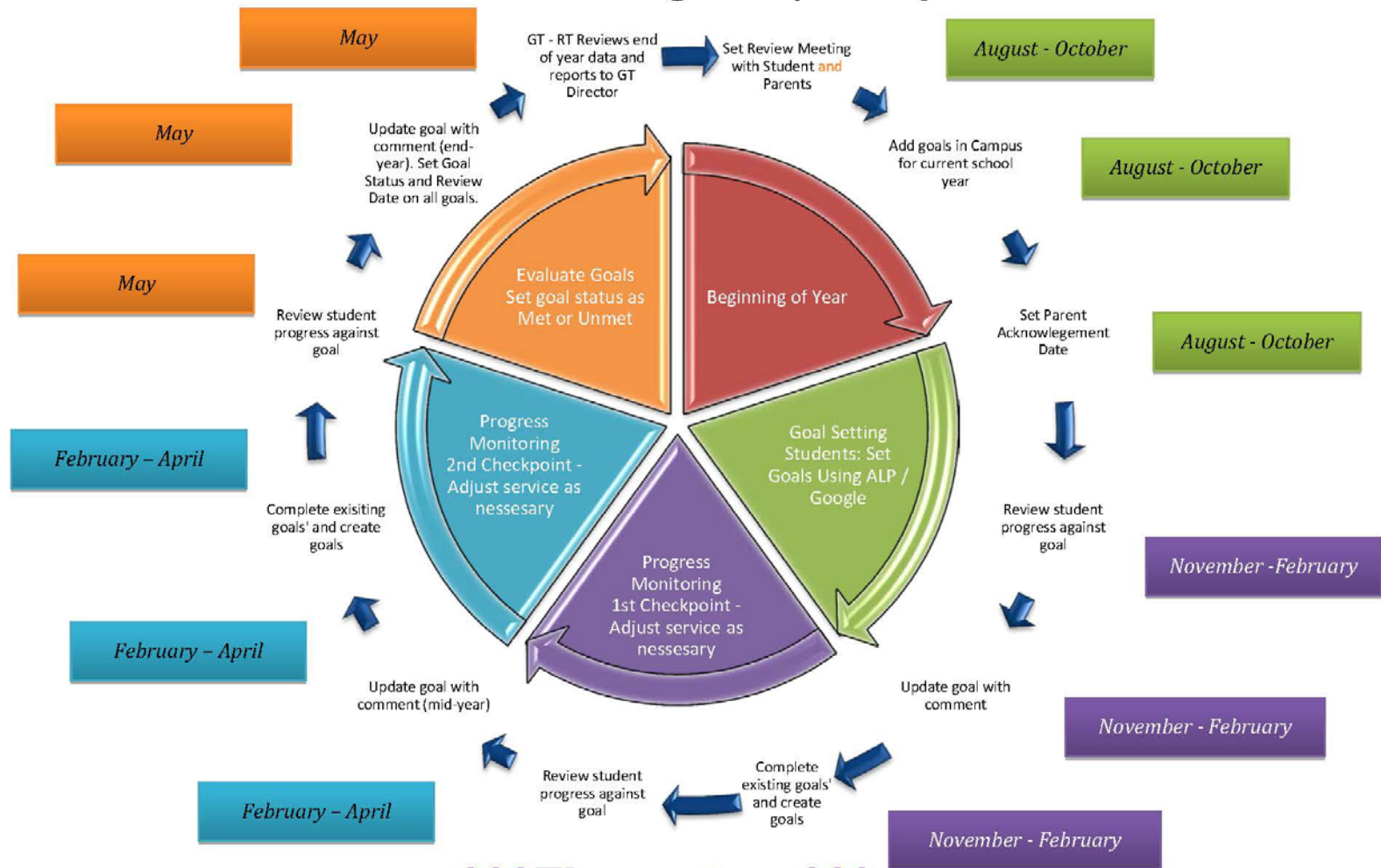
- The student will have an Advanced Learning Plan (ALP) written.
- The ALP will help guide programming choices.
- Programming is developed, implemented, and monitored by classroom teachers.
- Programming follows the ALP Life-cycle.
- Programming happens in primarily two settings, GT Center Classrooms or Typical Neighborhood Classrooms.

ALP Lifecycle - Elementary:



Educational Research and Design | Gifted and Talented
 1829 Denver West Drive, Building #27 | Golden, CO 80401
 phone: 303-982-6650 | fax: 303-982-6653
www.jeffcopublicschools.org/programs/gifted_talented

Advanced Learning Plan | Life Cycle



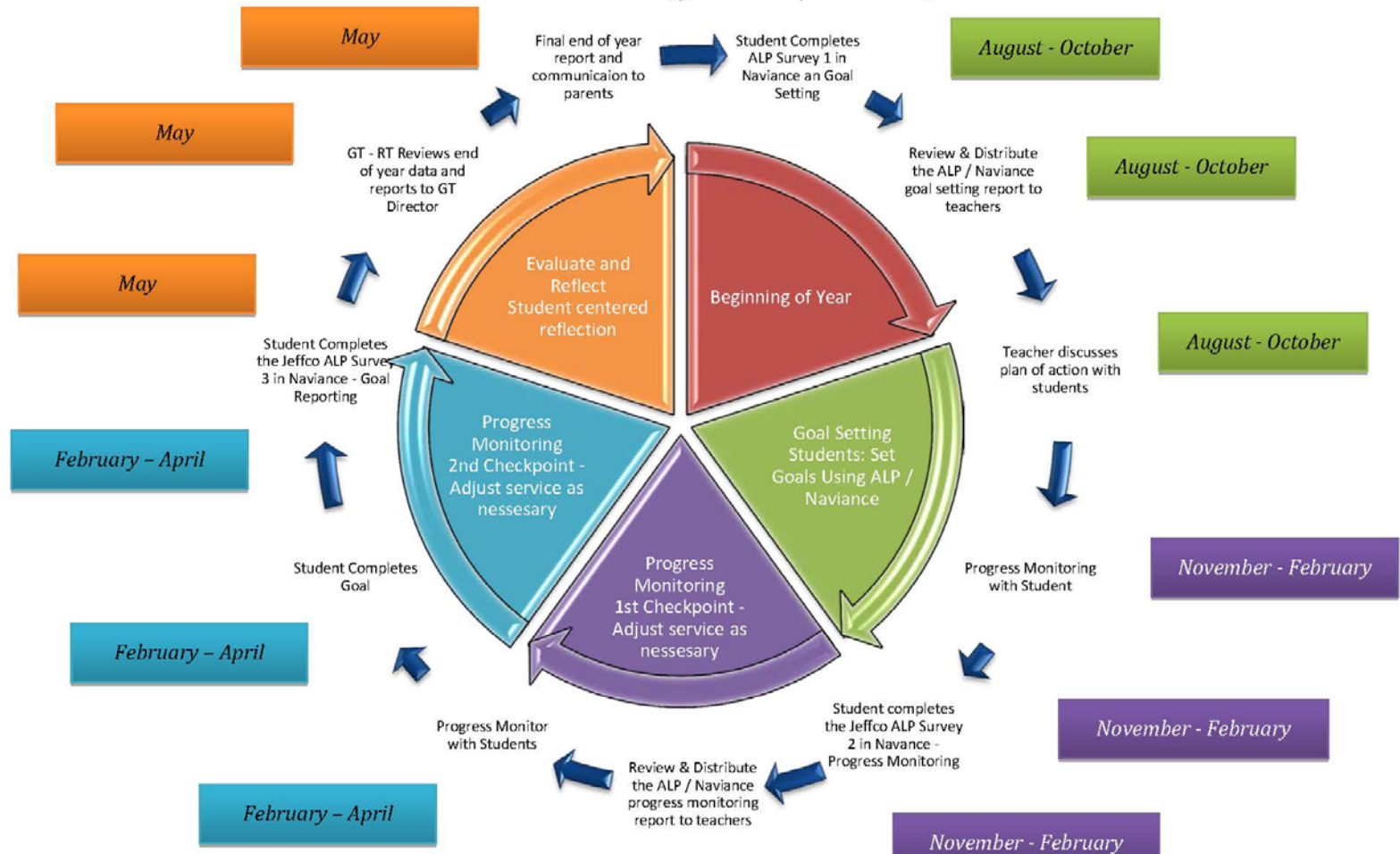
Elementary

ALP Lifecycle - Secondary:



Educational Research and Design | Gifted and Talented
 1829 Denver West Drive, Building #27 | Golden, CO 80401
 phone: 303-982-6650 | fax: 303-982-6653
www.jeffcopublicschools.org/programs/gifted_talented

Advanced Learning Plan | Life Cycle



Secondary

GT Center and Neighborhood Schools

Center Programs: Students with Multiple Strength Areas

- ❖ **Advanced Core Content – Compacted**
 - ❖ Pace Accelerated
 - ❖ Typically Math is one full year accelerated
 - ❖ Differentiated and Extended
 - ❖ Like ability peers
 - ❖ Highly qualified GT instructors
 - ❖ Social/Emotional Support
 - ❖ Attention to personal interest/passions
 - ❖ Enrichment Opportunities

Typical Schools: Students with 1-2+ Areas of Strength

- ❖ **Grade Level Content**
 - ❖ Flexible Grouping
 - ❖ Content Acceleration
 - ❖ Content Differentiated
 - ❖ 80% of identified ALP learners are in the typical school setting

What is Differentiation?

“It means teachers proactively plan varied approaches to **WHAT** students need to learn, **HOW** they will learn it, and/or how they will **SHOW WHAT THEY HAVE LEARNED** in order to increase the likelihood that each student will learn as much as he or she can, as efficiently as possible.”

Carol Ann Tomlinson



How do I know if GT center is right for my student?

- ✓ Child has specific needs that would be better met in a center school
- ✓ Child is internally motivated and driven
- ✓ Child is in need of intellectual peers
- ✓ Child wants to be in a center setting

Where are the GT Center Schools?

- GT Centers are housed within neighborhood schools.
- They are a “school within a school”.

Elementary:

Coronado
Devinny
Hackberry Hill
Kendrick Lakes
Kyffin
Parmalee
Sheridan Green
Stevens
Westridge

Middle School:

Creighton (7th-8th)
Evergreen Middle (6th-8th)
Everitt (7th-8th)
Ken Caryl (7th-8th)
North Arvada (7th-8th)
West Jefferson (6th-8th)

High School:

Wheat Ridge HS

How do I find out more about GT Center Programs?

- Come to one of our GT Center Parent Information Nights on **September 13th 2017** from 6:30-8:30pm

Central Location: Ed Center Board Room	Mountain Location: Evergreen MS	South Location: Ken Caryl MS	North Location: North Arvada MS
--	--	---	--

Learn more or apply online at :

http://www.jeffcopublicschools.org/programs/gifted_talented/application_testing_information/

To Apply for GT Center or Cognitive Testing:

Programs

Jeffco Public Schools / Programs / Gifted & Talented

Gifted & Talented

Advanced Learning Plans

Application & Testing Information

Early Access

GT Center Schools

Parent Resources

GT Identification

GT 101

Twice Exceptional Students

Gifted & Talented



Welcome to the Jeffco Gifted and Talented webpage! We are focused on **Actualizing Learners' Potential** for gifted and high ability learners in Jeffco Schools. We believe all students deserve an education that will provide meaningful growth academically, socially and emotionally. See our [Definition of a GT Student](#) and our [Board Policy on Gifted Education](#).

Our New Website Tour:

Gifted & Talented



Are there other supports, programs,
and services for GT learners?



Communication Pathway:

- Classroom teachers provide programming and support, guided by a student's ALP. They are your primary stop for communication and support of your child.
- Contact your school building GT building liaison for further support.
- If you are unable to reach resolution through the teacher or BL, contact your school's GT Resource Teacher.
- GT Resource teacher contact information is on our website. Your school's BL can let you know who works with your student's school.



Early Access for Highly Gifted 4 and 5 Year olds:

- **HB 08-1021**
- **Allow access to Kindergarten for Highly Gifted 4 year old children**
- **Allows access to First Grade for Highly Gifted 5 year old Children**
- **ONLINE Application OPENS in January and CLOSES mid March PORTFOLIO DUE**
- **Testing and collection of Body of Evidence in April**
- **Notification in May**



GT Parent Seminar Nights:



Monday, August 28, 2017

Topics: GT 101; Twice Exceptional Students; Social Emotional Needs of GT Learners; Advanced Learning Plans

Time: 6:30—8:00 pm

Location: Jeffco Education Center 5th Floor Board Room
1829 Denver West Dr., Golden, CO 80401

2017-18 Jeffco GT Parent Seminars

Parents of gifted children need access to a variety of resources, networking and support to help guide them through their child's academic journey.

The Gifted and Talented Department will be offering Parent Seminars in conjunction with JACG (Jefferson County Association for Gifted Children). The presentations are prepared by various professionals on issues related to gifted children.

The Parent Seminars focus on supporting the children, parents and educators while offering the resources and networking that are needed.

Tuesday, January 9, 2018

Topic: Understanding Your Student's CogAT Data

Time: 6:30—8:00 pm

Location: Jeffco Education Center 5th Floor Board Room
1829 Denver West Dr., Golden, CO 80401

Make-Up Date in case of inclement weather is Jan. 10, 2018

Support your student outside of school:

- Support Passion Development
- Encourage Challenge and Mastery
- Build Resilience and Grit
- Advocate for your Student
- Provide Explorations and Enrichment
- Promote failure as a building/learning point
- Growth-mindset



GT Parent Support & Resources:

- JeffCo GT Department - http://www.jeffcopublicschools.org/programs/gifted_talented/
- Jefferson County Association for Gifted Children (JAGC) - <http://www.jeffcogifted.org/>
- Colorado Association for the Gifted and Talented (CAGT) - <http://www.coloradogifted.org/>
- National Association for Gifted Children (NAGC) - <http://www.nagc.org/>
- Supporting the Emotional Needs of the Gifted (SENG) - <http://sengifted.org/>

SPARKS Summer Enrichment:

- The vision of Jeffco SPARKS is to empower the dreams and passions of high ability and gifted learners in order to build a knowledge base for the future.
- Learners will experience unique intellectual learning, leadership development, artistic opportunities, creative expression, as well as critical and creative problem solving.



Do you have any questions?





Have a wonderful evening!
